

THE
ULTIMATE
OUTBOARD MOTOR

2026 OUTBOARD MOTORS GENERAL CATALOGUE



Please read your Owner's Manual carefully. Never operate the boat while under the influence of alcohol or other drugs. Always wear a personal flotation device when boating. Please operate your outboard safely and responsibly.

Suzuki encourages you to operate your boat safely and with respect for the marine environment.

Specifications, appearances, equipment, colors, materials and other items of "SUZUKI" products shown in this catalogue are subject to change by manufacturers at any time without notice and they may vary depending on local conditions or requirements. Some models are not available in some territories. Each model might be discontinued without notice. Please enquire at your local dealer for details of any such changes. Actual body colors might differ from the colors in this brochure.



Suzuki Motor Corporation

300 TAKATSUKA-CHO, CHUO-KU, HAMAMATSU, SHIZUOKA 432-8611 JAPAN
www.globalsuzuki.com

99999-C1026-001
2026 OBM GENERAL CATALOGUE ENGLISH
Printed in Japan



CONTENTS

4-5 **SUZUKI CLEAN OCEAN PROJECT**

6-11 **SUZUKI ULTIMATE TECHNOLOGY**

12-13 **STEALTH LINE™ Series**

14-15 **V6 350-300HP
Flagship-GEKI Series**

DF350AMD/DF300BMD
DF350A/DF325A/DF300B

16-17 **V6 300-200HP**

DF300AP/DF250AP
DF250/DF225/DF200

18-19 **IN-LINE 4 200-150HP**

DF200AP/DF175AP/DF150AP
DF200A/DF175A/DF150A

20-21 **IN-LINE 4 140-70HP**

DF140BG/DF115BG
DF140B/DF115B/DF100C
DF100B/DF90A/DF80A/DF70A

22-23 **IN-LINE 3 60-25HP**

DF60AV/DF50AV
DF60A/DF50A/DF40A
DF30A/DF25A

24-25 **PORTABLE 20-2.5HP**

DF20A/DF15A/DF9.9B
DF9.9A/DF8A
DF6A/DF5A/DF4A
DF2.5

26-27 **Cargo Series**

DF250W/DF90AWQH

28 **FishHunter™ Drive
Integrated Control System "SYNCRO-EYE"**

29-32 **ACCESSORIES**

33 **ECSTAR OIL**

34-39 **FEATURES & SPECIFICATIONS**



**A RELIABLE PARTNER
FOR PLEASURE AND WORK
ON THE WATER**



SUZUKI CLEAN OCEAN PROJECT

Since 2020, Suzuki Clean Ocean Project has focused on reducing marine plastic waste through three key commitments: Clean-up the World Campaign, Reduce Plastic Packaging and Collect Marine Micro-plastic Waste.

Together, we can make a difference for cleaner, healthier oceans.

REDUCE PLASTIC PACKAGING

As part of our commitment to environmental sustainability, we are progressively replacing plastic packaging used for outboard motors and genuine marine parts with eco-conscious, sustainable alternatives—aiming to reduce plastic waste and minimise our environmental footprint.

REDUCED PLASTIC PACKAGING - as of June 2025
 ■ Packing for Suzuki Marine Genuine Parts **35.9 Ton**



Plastic Packaging

Paper & Biodegradable Materials

REDUCED PLASTIC PACKAGING - as of June 2025
 ■ Packing for Suzuki Outboard Motors **92.1 Ton**



- ① **OPP Tape**
Polypropylene → Paper
- ② **Outer Fixing Band**
Polypropylene → Paper
- ③ **Ink (for all the ink on the carton)**
Animal-derived ink → Botanical Ink
- ④, ⑤ **Fixing Form**
Polystyrene Foam → 100% biomass-derived polymers
- ⑥ **Upper Engine Cover Sheet**
Nylon → Rayon
- ⑦ **Engine Cover Sheet**
Polyethylene → 100% biomass-derived polymers
- ⑧ **Inner Fixing Band**
Polypropylene → Paper

TOTAL REDUCTION 128.0 Ton

COLLECT MARINE MICRO-PLASTIC WASTE

In response to the growing issue of plastic pollution in our oceans, Suzuki has developed the world's first Micro-Plastic Collecting (MPC) device designed for integration with outboard motors.



FEATURES

- Will not affect the performance of the engine even if the filter gets clogged since this device utilizes the used cooling water.
- Will not give negative effects on the environment.



DF140BG
DF115BG
 DRIVE BY WIRE

DF140B
DF115B
DF100C*
 Black Color Model Only
 MECHANICAL



CLEAN-UP THE WORLD CAMPAIGN

As of June 2025 More than 23,500 people from 95 groups participated in this activity.



LEADING THE INDUSTRY WITH AWARD WINNING FEATURES AND TECHNOLOGIES

FOR THE ULTIMATE BOATING EXPERIENCE

THE ULTIMATE OUTBOARD MOTOR

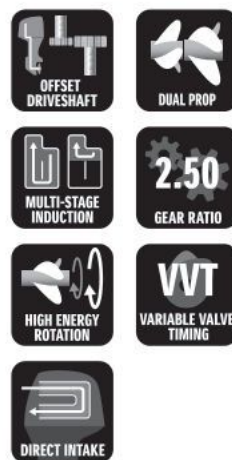
Durability & Reliability

- Durable
- Notify user before engine trouble
- Easy to service, repair



Performance

- Smooth and quick acceleration at all operating ranges
- Powerful torque



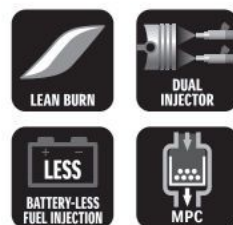
Ease & Comfort

- Less vibration
- Quiet operation
- Light & Compact
- Easy to use
- Smooth and Decisive shifting



Ecology & Economy

- Good fuel efficiency / low-emission
- Low maintenance cost
- Environment protection activities



NMMA Award

The Innovation Awards (recognizing technological innovation) granted each year by the NMMA (National Marine Manufacturers Association) are considered among the highest honors in marine technology. Of the new marine industry products in that year, they are awarded to "a product that shows technical leadership, is practical and cost-effective, and is truly beneficial to the consumer." Starting with the DT200 Exanté in 1987 and extending to the DF350A in 2017, Suzuki outboard motors have received this Innovation Award a total of nine times. Eight of these awards are for 4-stroke outboard motors.



Awarded Prizes

1987: DT200 Exanté / 1997: DF70 & DF60 /
1998: DF50 & DF40 / 2003: DF250 /
2006: DF300 / 2011: DF50A & DF40A / 2012: DF300AP /
2014: DF30A & DF25A / 2017: DF350A

Durability & Reliability



SUZUKI DUAL LOUVER SYSTEM

▶ DF350AMD/300BMD ▶ DF350A/325A/300B

Dog-leg shaped dual louver at the air intake remove water from the air taken into the cowl.

ADVANTAGE

- Prevents water intrusion.
- Allows a direct intake system, contributing to higher engine output.



SELF-ADJUSTING TIMING CHAIN

▶ DF40A AND UP

The timing chain running in an oil-bath can be adjusted automatically by an automatic hydraulic tensioner.

ADVANTAGE

- More durable than the belt type.
- Maintenance-free.



DUAL WATER INLET

▶ DF350AMD/300BMD ▶ DF350A/325A/300B
▶ DF300AP/250AP ▶ DF250W

The engine's cooling system relies on water supplied through two water inlets located on the lower unit.

ADVANTAGE

- Increases the water flow, providing better cooling performance.



DF350AMD



WATER DETECTING SYSTEM

▶ DF70A AND UP

A water detecting fuel filter prevents water intrusion. When water is detected, the system will alert the driver with visual and audio warnings.

ADVANTAGE

- Prevents lower power output and corrosion by avoiding water intrusion.



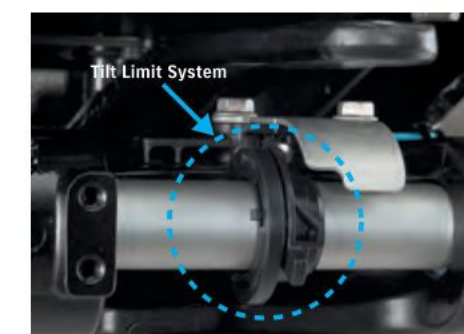
TILT LIMIT SYSTEM

▶ DF50AV AND UP
(not including DF90AWQH, DF60AQH, DF50A/40A)

Tilt Limit System prevents the outboard from tilting beyond a selected angle.

ADVANTAGE

- Prevents damage to the boat or outboard due to excessive outboard tilting.



DF200A



SUB WATER INLET

OPTIONAL: ▶ DF140BG/115BG ▶ DF140B/115B/100C
▶ DF100B/DF90A/DF80A/DF70A
STANDARD: ▶ DF60A/50A/40A

Two water inlets in different directions ensure that the engine does not overheat due to the clogging of algae.





KEYLESS START SYSTEM

OPTIONAL: ▶ DF70A AND UP

This system allows you to start multiple engines by placing key-fob nearby.

- One push Start & Stop for up to 6 outboard motors.
- Waterproof Float Key Fob.
- Security support with immobilizer.

ADVANTAGE

- Provides high security.
- No ignition key is necessary.

*Available with SMG4



SUZUKI ANTI-CORROSION FINISH

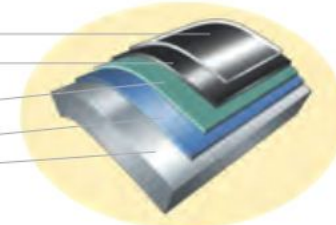
▶ ALL MODELS

Special protection is applied to the aluminum surface using high strength bonding to protect the aluminum made exterior parts.

ADVANTAGE

- Protection against corrosion improves the overall outboard durability.

Resin Clear Topcoat
Resin Black(or White)
Basecoat
Primer Undercoat
Suzuki Anti-Corrosion Finish
Suzuki Aluminium Alloy



SDSM+ (SUZUKI DIAGNOSTIC SYSTEM MOBILE+)

▶ DF9.9B AND UP*

This app enables you to make a plan for boating with the weather forecast and check the engine condition & operation tips for the next boating. All functions are available for free.* Please check the details in P.29 or on our website.

*SMG4 and a smartphone running Android/iOS are required.



ADVANTAGE

- Possible to make a plan for boat trip with checking the weather forecast in advance.
- Check up on the engines before the departure based on the engine data.
- Acquire the engine data by scanning the QR code*.
- Provide the engine data to dealer and ask for maintenance easily.

*DENSO WAVE owns the rights of the name and the logo of QR code.



HIGH ENERGY ROTATION

DF60AV/50AV

Larger lower units (2.42 gear ratio) make it possible to equip larger 36cm (14-inch) propeller than other models in this class. It owns good acceleration and large power.

ADVANTAGE

- Powerful torque to carry heavy loads.
- Quick acceleration with larger propellers.
- Quick and smooth planing.

DF60AV vs. DF60A size comparison



	DF60AV	DF60A
Gear Ratio	2.42	2.27



MULTI-STAGE INDUCTION

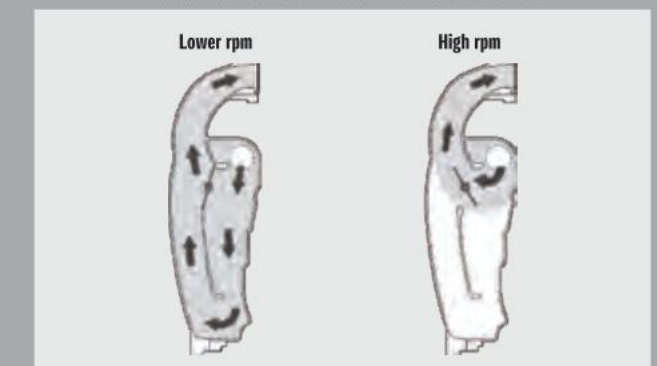
DF250/225 DF200AP/175AP/150AP
DF200A/175A/150A DF250W

Manifold pipes are switched between short and long during low speed and high speed operation to ensure the right volume of air enters the engine.

ADVANTAGE

- Increases output during high speed operation with greater volume of air input.
- Increases combustion efficiency and maximizes torque during low speed operation.

AIR FLOW IN MULTI-STAGE INDUCTION MODULE



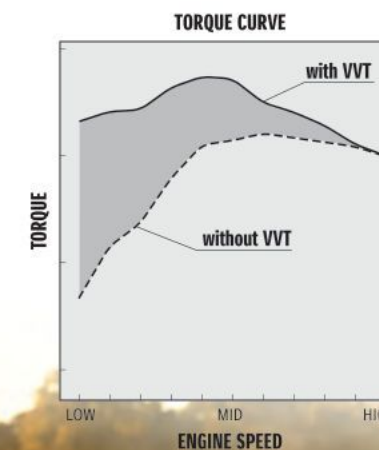
VVT (Variable Valve Timing)

▶ DF350AMD/300BMD ▶ DF350A/325A/300B
▶ DF300AP/250AP ▶ DF250AUN ▶ DF250 ▶ DF250W
▶ DF200AP/175AP/150AP ▶ DF200A/175A

The Variable Valve Timing controls the opening and closing timing of the intake valve depending on the engine RPM.

ADVANTAGE

- Offers smooth, powerful torque.
- Provide smooth acceleration over all speed ranges.



DIRECT AIR INTAKE

▶ DF350AMD/300BMD ▶ DF350A/325A/300B

A direct airflow path from the intake port to the cylinder suppresses temperature rise of the air and improves combustion efficiency.

ADVANTAGE

- Delivers higher power output from a small displacement.



SUZUKI DUAL PROP SYSTEM

▶ DF350AMD/300BMD ▶ DF350A/325A/300B

The Suzuki Dual Prop System spins two propellers rotating in opposite directions on a single engine. With the 6 blades, it can make a good stroke efficiently.

ADVANTAGE

- Achieve superior stability when driving straight.
- Powerful reverse thrust and braking force.
- Good water gripping performance and quick startup acceleration.

Performance



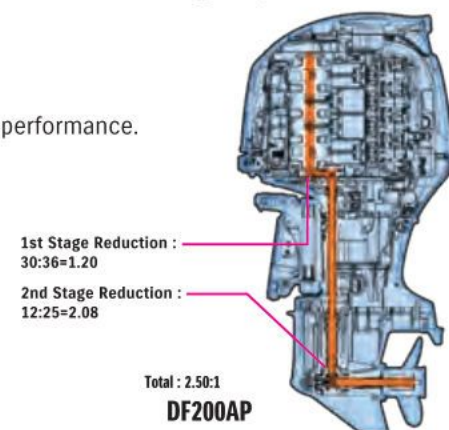
OFFSET DRIVESHAFT

▶ DF70A AND UP

The engine powerhead is positioned closer to the front, moving the outboard's center of gravity forward.

ADVANTAGE

- Less vibration.
- More compact.
- Stable steering performance.



2-STAGE GEAR REDUCTION

▶ DF70A AND UP

This design makes a larger gear ratio possible, allowing it to turn a large diameter propeller.

ADVANTAGE

- Increased power to turn large diameter propellers, offering quick acceleration.
- High propulsive efficiency with large diameter propeller.
- Powerful navigation, maintaining propeller rotation even with a larger load.

GEAR RATIO IN EACH CLASS

MODEL	DF140BG/115BG DF140B/115B/100C DF100B/90A/80A/70A DF90AWQH	DF200A(AP)/ 175A(AP)/150A(AP)	DF250/ 225/200	DF300AP/ 250AP DF250W DF250AUN	DF350AMD/ 300BMD DF350A/ 325A/300B
GEAR RATIO	2.59:1	2.50:1	2.29:1	2.08:1	2.29:1

Ease & Comfort

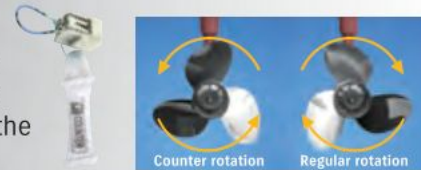
SUZUKI SELECTIVE ROTATION

DF300AP/250AP DF200AP/175AP/150AP

Function for selecting regular or counter rotation on one outboard with an optional connector and a counter rotation propeller.

ADVANTAGE

- Either regular or counter rotation can be used on the same outboard.



SUZUKI PRECISION CONTROL (SPC) (Electronic Throttle and Shift Systems)

DF350AMD/300BMD DF350A/325A/300B DF300AP/250AP
DF250AUN DF200AP/175AP/150AP DF140BG/115BG

Operation from the remote control is delivered to the outboard via an electric signal and it enables the 1 lever operation for up to 6 outboard motors (for dual mount only).

ADVANTAGE

- Less friction and resistance compared to the mechanical ones.
- Easy control for multiple outboard motors.
- Improved fuel economy with the combination of Lean Burn Control System.



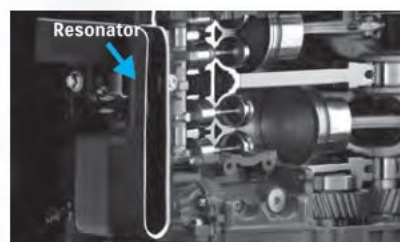
NOISE REDUCTION

DF350AMD/300BMD DF350A/325A/300B
DF200AP/175AP/150AP DF200A/175A/150A
DF140BG/115BG DF140B/115B/100C

Intake noise is suppressed with silencer and resonator.

ADVANTAGE

- Less noise, making boating more pleasant.



DF200A

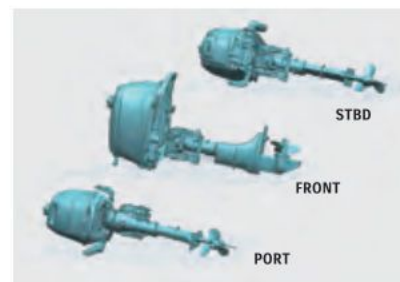
THREE-WAY STORAGE

DF6A/5A/4A

The design allows the outboard to be removed from the boat and placed on any of its 3 sides for storage.

ADVANTAGE

- No need to worry about the loading space or method.



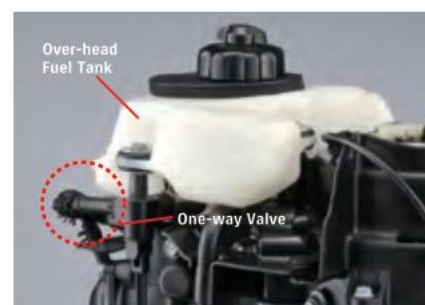
OVERHEAD TANK

DF6A/5A/4A

The integral overhead fuel tank and one-way valve delivers fuel supply by using gravity.

ADVANTAGE

- Contributes to easy start.



AUTOMATIC TRIM

OPTIONAL: DF100C AND UP

The Automatic Trim adjust trim angle automatically depending on the engine RPM without your control.

ADVANTAGE :

- Helps to keep the appropriate trim angle and contribute to achieve faster top speed and better fuel efficiency.

*Available with SMG4

SUZUKI TROLL MODE SYSTEM*

DF40A AND UP
Optional for Remote Control Models
(not including DF90AWQH)

This system helps the boat running at a certain speed range in low RPM.

ADVANTAGE

- Boat can keep running at a certain speed range in low revs without having to operate the throttle on the boat.
- Gives you highly precise control at low RPM.

*Available with SMG4, or Troll Mode Switch Panel



SUZUKI EASY START SYSTEM

DF40A AND UP

Simply turn the key and release, and the starter stays engaged until the engine starts. This system offers a smoother start of the engine.

INTEGRATED STEERING SYSTEM

DF350AMD/300BMD

The conventional external hydraulic cylinder is built into the outboard motor.

ADVANTAGE

- Simple appearance of the motorwell when rigging.
- Allows rigging to various types of boats.
- Easy rigging.

GAS ASSIST SYSTEM

DF90AWQH DF60AQH/40AQH DF30AQH

Enables the outboard motor to be tilted up or down quickly with minimal force.

Ecology & Economy

BATTERY-LESS ELECTRONIC FUEL INJECTION

DF30A/25A DF20A/15A/9.9B

This technology delivers quicker start, smoother operation, and more acceleration without a battery.

ADVANTAGE :

- Operates without battery.
- Quick and easy start.
- Cleaner and economic fuel consumption.
- Higher and smoother performance in almost all operating ranges.

DUAL INJECTOR

DF350AMD/300BMD DF350A/325A/300B

The dual injector delivers just the right amount of fuel at the right time into each cylinder.

ADVANTAGE :

- Contributes to higher output and better fuel efficiency.



LEAN BURN CONTROL SYSTEM

DF9.9B AND UP
(not including DF250/225/200, DF250W, DF90AWQH)

The Lean Burn Control System supplies the appropriate amount of fuel and air mixture depending on the navigation conditions.

ADVANTAGE :

- Significant improvement in fuel economy in all speed ranges especially at cruising speed.
- Fuel is saved and gasoline costs are cut.

Micro-Plastic Collecting Device

DF140BG/115BG DF140B/115B/100C

As one of the actions in SUZUKI CLEAN OCEAN PROJECT, we developed the device to collect micro-plastics in the oceans just by running SUZUKI's outboard motors.

ADVANTAGE :

- Collect micro-plastics through your outboard motors.
- Not sacrificing the engine performance.

THE
ULTIMATE
OUTBOARD MOTOR

STEALTH LINE™



NEW DF350A

DF350AMD

DF300AP

DF250AUN



NEW DF200AP

DF200A

NEW DF150AP

DF150A

NEW DF140BG

DF140B

NEW DF115BG

DF115B

BOLD QUIET STYLISH

DRIVE BY WIRE

DF350AMD DF350A DF300AP DF250AUN
DF200AP DF150AP DF140BG DF115BG

MECHANICAL

DF200A DF150A DF140B DF115B

The bold Stealth Line from Suzuki Marine – a range of outboard motors defined by quiet power, exceptional endurance, and now, striking design. With a sleek matte black finish, chrome black graphics, and refined styling, the ONE blends renowned Suzuki performance with a commanding new look. Recognized with the 2024 Top Products Award by Boating Industry Magazine, the Stealth Line proves why Suzuki remains the ultimate choice in outboard motors.

Durability & Reliability

ANTI CORROSION ALL MODELS	DUAL LOUVER DF350AMD DF350A	DUAL WATER INLET DF350AMD DF350A DF300AP	SELF-ADJUSTING TIMING CHAIN ALL MODELS	WATER DETECTING SYSTEM ALL MODELS	TILT LIMIT ALL MODELS	KEYLESS START SYSTEM (OPTIONAL*1)	SDSM+ (OPTIONAL*1)
------------------------------	-----------------------------------	---	---	--------------------------------------	--------------------------	--------------------------------------	-----------------------

Ecology & Economy

DUAL INJECTOR DF350AMD	LEAN BURN ALL MODELS	MPC DF140B DF140BG DF115B DF115BG
---------------------------	-------------------------	---

Performance

2.29 GEAR RATIO DF350AMD DF350A	2.08 GEAR RATIO DF300AP DF250AUN	OFFSET DRIVESHAFT ALL MODELS	VVT DF350AMD DF350A DF300AP DF250AUN DF200A DF200AP	DUAL PROP DF350AMD DF350A
2.50 GEAR RATIO DF200A DF200AP DF150A DF150AP	2.59 GEAR RATIO DF140B DF140BG DF115B DF115BG	MULTI-STAGE INDUCTION DF200A DF200AP DF150A DF150AP		

Ease & Comfort

SELECTIVE ROTATION DF300AP DF200AP DF150AP	PRECISION CONTROL DF350AMD DF350A DF300AP DF250AUN DF200AP DF150AP DF140BG DF115BG	TROLL MODE (OPTIONAL*2)	EASY START SYSTEM ALL MODELS	NOISE REDUCTION DF350AMD DF350A DF200A DF200AP DF150A DF150AP DF140B DF140BG DF115B DF115BG	INTEGRATED STEERING SYSTEM DF350AMD DF350A	AUTOMATIC TRIM (OPTIONAL*1)
---	--	----------------------------	---------------------------------	---	--	--------------------------------

*1 Available with SMG4

*2 Available with SMG4, or Troll Mode Switch Panel



GEKI
FLAGSHIP SERIES

PARTING SEAS

A Force to Match the Power of Nature and the Sea Representing Suzuki's Identity and Heritage. A Symbol of Our Passion and Commitment to the Ultimate in Marine Innovation

* "GEKI: PARTING SEAS" is the logo that represents the DF350AMD/DF300BMD, DF350A/DF325A/DF300B



SUZUKI DUAL LOUVER SYSTEM P7

Dual Louver system is equipped at the air intake to remove water from the air taken into the cowl. Incorporating a direct intake system makes the highest compression ratio of 12.0:1 (DF350AMD, DF350A), 10.5:1 (DF300BMD, DF325A/300B) possible, ultimately leading to a higher engine output.



SUZUKI DUAL PROP SYSTEM P9

The dual prop system efficiently transmits the horsepower output into propulsion under water. As an added benefit, because each propeller rotates in a different direction, exceptional stability is achieved. In addition, the contra-rotating propellers produce a strong reverse thrust.



DUAL WATER INLET P7

The engine's cooling system relies on water supplied through low water intakes located on the lower unit. This dual water inlet configuration increases water flow into the lower unit, delivering greater cooling efficiency.



DUAL INJECTOR P11

Dual injectors deliver just the right amount of fuel at just the right time into the cylinder. This dual injector contributes to higher output and better fuel efficiency.

DRIVE BY WIRE

DF350A/DF325A/DF300B

DF350AMD/ DF300BMD

THE
ULTIMATE
OUTBOARD MOTOR



Durability & Reliability



Ecology & Economy



Performance



Ease & Comfort



*1 Available with SMG4

*2 Available with SMG4, or Troll Mode Switch Panel

*3 DF350AMD/300BMD

SPECIFICATIONS / FEATURES P34

Flagship-GEKI SERIES

V6 300-200HP

IN-LINE 4 200-150HP

IN-LINE 4 140-70HP

IN-LINE 3 60-25HP

PORTABLE 20-2.5HP

CARGO SERIES



NEW
DF300AP

DF250AP

DRIVE BY WIRE



DF250AUN

DRIVE BY WIRE



NEW

DF250

MECHANICAL

DF225/DF200

STANDARD FEATURES

Durability & Reliability

ANTI CORROSION	SELF-ADJUSTING TIMING CHAIN	WATER DETECTING SYSTEM	TILT LIMIT	SDSM+ (OPTIONAL*1)
ALL MODELS	ALL MODELS	ALL MODELS	ALL MODELS	ALL MODELS

Performance

2.29 GEAR RATIO	2.08 GEAR RATIO	OFFSET DRIVESHAFT	VARIABLE VALVE TIMING	MULTI-STAGE INDUCTION
DF250 DF225 DF200	DF300AP DF250AP DF250AUN	ALL MODELS	DF300AP DF250AP DF250 DF250AUN	DF250 DF225

ADDITIONAL FEATURES FOR DRIVE BY WIRE MODEL

Durability & Reliability

DUAL WATER INLET	KEYLESS START SYSTEM (OPTIONAL*1)
DF300AP DF250AP	ALL MODELS

Ease & Comfort

SELECTIVE ROTATION	PRECISION CONTROL	TROLL MODE (OPTIONAL*2)	EASY START SYSTEM	AUTOMATIC TRIM (OPTIONAL*2)
DF300AP DF250AP	DF300AP DF250AP DF250AUN	ALL MODELS	ALL MODELS	ALL MODELS

Ecology & Economy

LEAN BURN
DF300AP DF250AP DF250AUN

*1 Available with SMG4

*2 Available with SMG4, or Troll Mode Switch Panel



DF200AP

DF175AP / DF150AP

DRIVE BY WIRE

DF200A

DF175A / DF150A

MECHANICAL

STANDARD FEATURES

Durability & Reliability

- ANTI CORROSION** ALL MODELS
- SELF-ADJUSTING TIMING CHAIN** ALL MODELS
- WATER DETECTING SYSTEM** ALL MODELS
- TILT LIMIT** ALL MODELS
- SDSM+** (OPTIONAL*1) ALL MODELS
- KEYLESS START SYSTEM** (OPTIONAL*1) ALL MODELS

Performance

- OFFSET DRIVESHAFT** ALL MODELS
- 2.50 GEAR RATIO** ALL MODELS
- MULTI-STAGE INDUCTION** ALL MODELS
- VVT VARIABLE VALVE TIMING** Not including DF150A

Ease & Comfort

- NOISE REDUCTION** ALL MODELS
- TROLL MODE** (OPTIONAL*2) ALL MODELS
- EASY START SYSTEM** ALL MODELS
- AUTOMATIC TRIM** (OPTIONAL*2) ALL MODELS

Ecology & Economy

- LEAN BURN** ALL MODELS

ADDITIONAL FEATURES FOR DRIVE BY WIRE MODEL

Ease & Comfort

- SELECTIVE ROTATION** DF200AP, DF175AP, DF150AP
- PRECISION CONTROL** DF200AP, DF175AP, DF150AP

*1 Available with SMG4 *2 Available with SMG4, or Troll Mode Switch Panel

SPECIFICATIONS / FEATURES P35

THE **ULTIMATE** OUTBOARD MOTOR

Flagship-GEKI SERIES
V6 300-200HP
IN-LINE 4 200-150HP
IN-LINE 4 140-70HP
IN-LINE 3 60-25HP
PORTABLE 20-2.5HP
CARGO SERIES

THE
ULTIMATE
OUTBOARD MOTOR



DF140BG

DF115BG
DRIVE BY WIRE

with MPC

DF140B

DF115B / DF100C

MECHANICAL

with MPC

Black Color Model Only



DF100B

DF90A / DF80A / DF70A

MECHANICAL

Tiller handle Available in for 90hp & 70hp



STANDARD FEATURES

Durability & Reliability



Ease & Comfort



Performance

Ecology & Economy

ADDITIONAL FEATURES FOR DRIVE BY WIRE MODEL

Ease & Comfort



*1 Available with SMG4 *2 Available with SMG4, or Troll Mode Switch Panel

SPECIFICATIONS / FEATURES **P35 P36**

Flagship-GEKI SERIES

V6 300-200HP

IN-LINE 4 200-150HP

IN-LINE 4 140-70HP

IN-LINE 3 60-25HP

PORTABLE 20-2.5HP

CARGO SERIES



DF60AV

DF50AV

HIGH ENERGY ROTATION

Tiller Handle Model Available

DF60A

DF50A / DF40A

Tiller Handle Model & Gas Assist Model Available

STANDARD FEATURES

Durability & Reliability

ALL MODELS	ALL MODELS (not including Gas Assist models & DF50A/40A)	ALL MODELS	(OPTIONAL *1) ALL MODELS	DF60A DF50A DF40A

Performance Ease & Comfort Ecology & Economy

DF60AV DF50AV	(OPTIONAL *2) REMOTE CONTROL MODELS (STANDARD) TILLER HANDLE MODELS	ALL MODELS	ALL MODELS

*1 Available with SMG4 *2 Available with SMG4, or Troll Mode Switch Panel

THE
ULTIMATE
OUTBOARD MOTOR



Flagship-GEKI SERIES

V6 300-200HP

IN-LINE 4 200-150HP

IN-LINE 4 140-70HP



DF30A

DF25A

BATTERY-LESS EFI

Gas Assist Model Available
Remote Control Model Available

STANDARD FEATURES

Durability & Reliability

(OPTIONAL *1) ALL MODELS	

Ecology & Economy

--	--

*1 Available with SMG4
SPECIFICATIONS / FEATURES P37

IN-LINE 3 60-25HP

PORTABLE 20-2.5HP

CARGO SERIES

THE
ULTIMATE
OUTBOARD MOTOR



DF20A

DF15A / DF9.9B

BATTERY-LESS EFI



DF9.9A

DF8A



DF6A

DF5A / DF4A

THREE WAY STORAGE



DF2.5

STANDARD FEATURES

Durability & Reliability

- ANTI CORROSION**
ALL MODELS
- SDSM***
(OPTIONAL*¹)
DF20A
DF15A
DF9.9B

Ease & Comfort

- THREE-WAY STORAGE**
DF6A
DF5A
DF4A
- OVERHEAD TANK**
DF6A
DF5A
DF4A

Ecology & Economy

- LEAN BURN**
DF20A
DF15A
DF9.9B
- BATTERY-LESS FUEL INJECTION**
DF20A
DF15A
DF9.9B

*1 Available with SMG4

SPECIFICATIONS / FEATURES **P38**

Flagship-GEKI SERIES

V6 300-200HP

IN-LINE 4 200-150HP

IN-LINE 4 140-70HP

IN-LINE 3 60-25HP

PORTABLE 20-2.5HP

CARGO SERIES

THE
ULTIMATE
OUTBOARD MOTOR

DURABLE
RELIABLE
POWERFUL



Cargo

The Cargo Series is engineered to meet the demands of the commercial market, delivering high torque and advanced technologies that enhance durability and reliability—resulting in a strong, dependable outboard motors built for the job.

DF250W

Durability & Reliability Strengthened Gear
High Torque



DF90AWQH

Durability & Reliability
High Torque
Easy Handling
Battery Chargeable at Idle Speed

STANDARD FEATURES

Durability & Reliability



Performance



Ease & Comfort

*1 Available with SMG4

STANDARD FEATURES

Durability & Reliability



Performance



Ease & Comfort



*1 Available with SMG4

SPECIFICATIONS / FEATURES P39

Flagship-GEKI SERIES
V6 300-200HP
IN-LINE 4 200-150HP
IN-LINE 4 140-70HP
IN-LINE 3 60-25HP
PORTABLE 20-2.5HP
CARGO SERIES

Exclusive Option

FURUNO FishHunter™ Drive

FishHunter™ Drive delivers all-new control features for boaters utilizing Suzuki outboard models driven by the Furuno NAVpilot-300 Autopilot. These new features offer enhanced autopilot controls for precision navigation of routes and advanced fishing features for anglers while jigging, or trolling.

Applicable Models : All SPC models** (DF350AMD/300BMD**, DF350A/325A/300B, DF300AP/250AP, DF250AUN, DF200AP/175AP/DF150AP, DF140BG/115BG)
 **1 Gateway is required.
 **2 Point Lock™ function is not available.



NAVpilot
NAVpilot-300



Speed Control

The boat will maintain a preset speed by adjusting engine RPM.



Route Smoothing™

Automatically controls the speed at waypoints for smooth turns while navigating a designated route. On approach to the final waypoint, the boat will slow down and activate Point Lock™ automatically to hold on the destination.



Point Lock™*3

Allows the vessel to easily keep a fixed position by controlling the steering and shift, canceling the effects of wind and current.

*3 Rudder Angle Sensor is required.



SABIKI™ Lock

Expands upon the NAVpilot-300's SABIKI™ function by controlling both the steering and throttle to maintain stern direction, freeing the angler to focus 100% on jigging and other vertical fishing.

Integrated Control System



Suzuki's Technology Vision



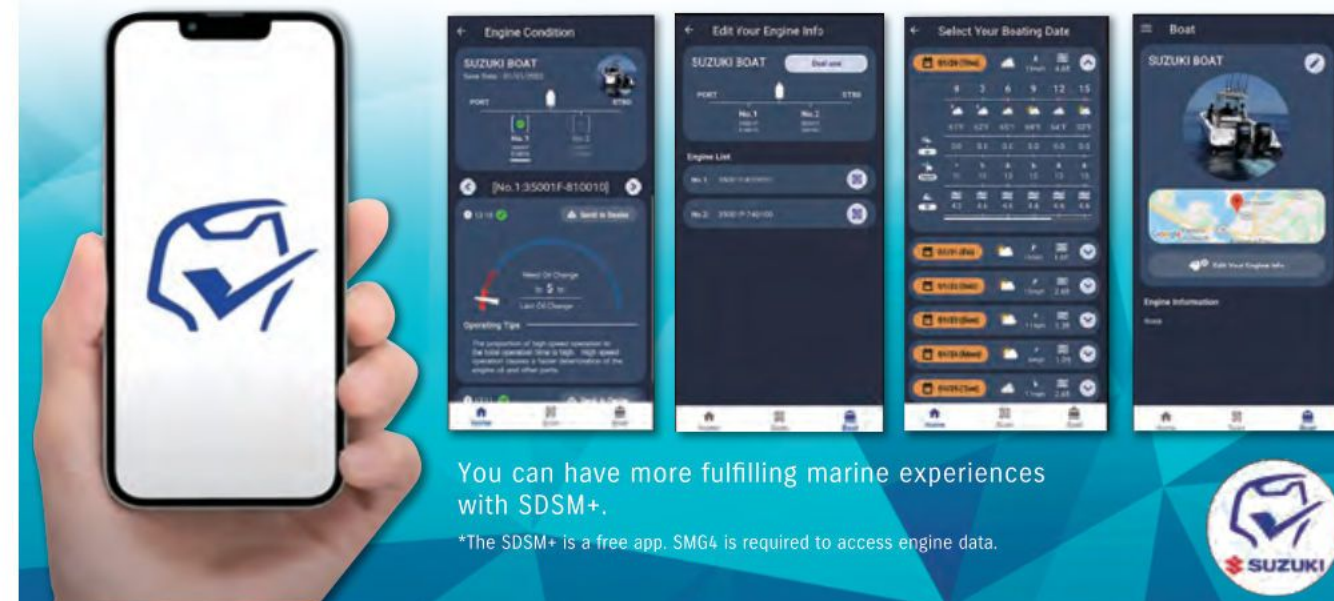
"SYNCRE-EYE" is a comprehensive system Suzuki has developed which "connects" various devices so that they may work together in synchronization. This innovative system will also improve the control technology of the boat by "sensing" various situations surrounding the boat and be compatible with future technologies.

ACCESSORIES

THE **ULTIMATE**
OUTBOARD MOTOR

SUZUKI DIAGNOSTIC SYSTEM MOBILE PLUS (SDSM+)

DF9.9B AND UP*
*Available with SMG4



You can have more fulfilling marine experiences with SDSM+.

*The SDSM+ is a free app. SMG4 is required to access engine data.

3 Features of the SDSM+

1. Plan a boat trip with the forecast*

- + You can make a boating plan along with referring to the weather, wind, and wave condition of a designated point.
- + The app also shows the weekly weather forecast, which will be constantly updated.

*You need to input your boat information.

2. Inspect boat and outboard motor in advance

- + Outboard motor can be checked based on the engine data.
- + You can inspect boat and engine in advance based on the check list.

3. Acquire engine data

- + You can check the engine condition and your driving tendencies.
- + You can share engine data with your dealer, which can shorten the service time.



Apple and the Apple logo are trademarks of Apple Inc., registered in the U.S. and other countries. App Store is a service mark of Apple Inc., registered in the U.S. and other countries.

Google Play and the Google Play logo are trademarks of Google LLC.

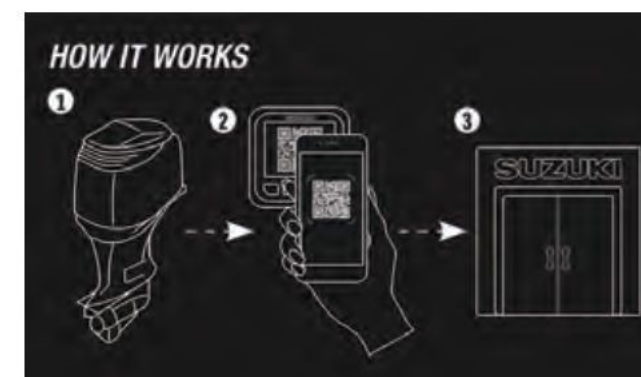
How to Get The Engine Data

1. The outboard will convert engine data into a QR code* displayed on the SMG4.
2. Open the app and scan the QR code. The app will receive the engine data and automatically attach it to an e-mail.
3. You can then send the e-mail to your nearby dealer to shorten the maintenance time.

*DENSO WAVE owns the rights of the name and the logo of QR code.



Find out more at our Global Website



ACCESSORIES

THE
ULTIMATE
OUTBOARD MOTOR

SUZUKI PRECISION CONTROL (SPC) (Electronic Throttle and Shift Systems)



Find out more from our video

▶DF350AMD/300BMD ▶DF350A/325A/300B ▶DF300AP/250AP ▶DF250AUN ▶DF200AP/175AP/150AP ▶DF140BG/115BG

Suzuki's best technology lies in the SUZUKI PRECISION CONTROL (SPC) (Electronic Throttle and Shift Systems). SPC enables instant, precise throttle response for greater control and accuracy.

FEATURES

- Controls up to 6 outboard motors.
- 1-action start for multi-motor boats: Motors start in order from port to starboard.
- Automatic Trim is available with SMG4.
- 1 Lever Operation : This switch allows multiple motor operation with just 1 lever.(Dual top mount only)
- Integrated Emergency Switch (Flush Mount only)

Remote Control Box

Integrated "Select" and "Throttle Only" switch (All)



Single Top Mount

Dual Top Mount

Flush Mount

Control Panel



Switch Panel for regular key



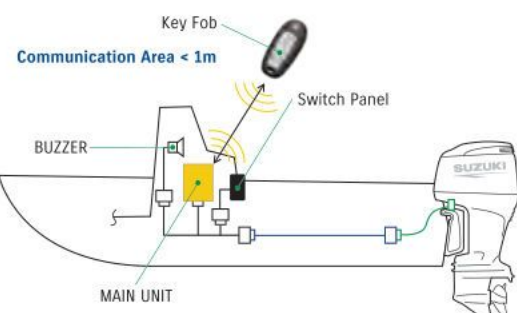
KEYLESS START SYSTEM*

▶DF70A AND UP

DESIGN

How to use

1. Stand nearby the console with the key fob.
2. Push START/STOP button to start engine.
3. To turn off the engine, push the button again.



Find out more by watching our videos

*Please check applicability with your local Suzuki dealer.

FEATURES

- 3 types of panels are available: Horizontal, Vertical and Separate.
- 1-push Start/Stop, and controls up to 6 engines. No ignition key necessary.



SUZUKI MULTI-FUNCTION GAUGE (SMG4)

▶DF9.9B AND UP

Suzuki Multi-Function Gauge provides all performance information in one gauge. Individual elements can also be emphasized to further enhance user friendliness.

SMG4



DAY MODE

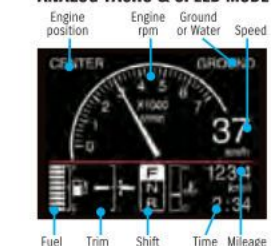
NIGHT MODE

SPECIFICATIONS

- 3.5 Color Display
- Size: 105mm(W)x105mm(H)x16mm(D)
- NMEA2000 output
- Shows both digital and analogue readouts, as well as day/night mode
- Displays the QR code* for SDSM+
- Troll Mode Function: Allows user to control troll mode (only for 2019MY ~ models adapted to troll mode)

*DENSO WAVE owns the rights of the name and the logo of QR code.

ANALOG TACHO & SPEED MODE



Troll Mode



FEATURES

Multilingual Menu



English, French, Italian, German, Spanish, Swedish, Norwegian, Finnish, Dutch, Portuguese, Danish, Russian, Japanese Chinese version is also available.

Automatic Trim Function



Automatically adjusts trim angle



The Suzuki Ultimate Rigging Selector is a new website that Suzuki Motor Corporation released. The website is designed to assist users in choosing which Part Number they will need for their desired application.

Required Items					
	PART NUMBER	NAME	QTY	NOTES	REMARKS
KIT	62000-98L03-000	KIT, SINGLE ENGINE, 1st version	1	Kit details	Click here to check kit components.
A	37300-98L00-000	MAIN SWITCH PANEL	1		
B	37801-98L00-000	EMERGENCY SWITCH PANEL	1		
C	30420-98L00-000	MAIN WIRING HARNESS(6.5w / 21.3R)	1		
D	20820-98L20-000	MAIN WIRING HARNESS Extension (2m / 6.5R)	1	Optional	
E	37800-98L00-000	TROLL MODE SWITCH PANEL	1	Optional	
GAUGE	34011-98L44-000	SUZUKI MULTI-FUNCTION GAUGE (SMG4)	1		
GAUGE	30001-98L00-000	CABLE KIT for SMG4	1	Kit details	MSC Single-source: Check kit details in Parts List Section.
Optional 1-1	54190-98L00-000	SENSOR ASSY, PADDLE WHEEL (Speed Over Water)	1	Optional	MSC Single-source: 990C9-683E7-000
Optional 1-2	39950-98L02-000	GPS RECEIVER MODULE (Speed Over Ground)	1	Optional	

Click here to see the current selection.

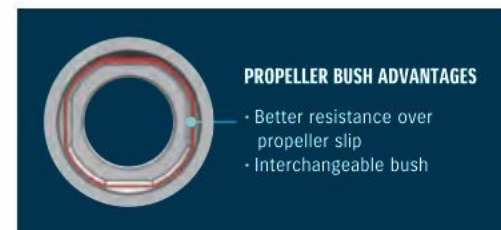


ACCESSORIES

WATERGRIP PROPELLER

WATERGRIP is a stainless-steel propeller series offering accurate response to your operation. With efficient conversion of engine power into propulsion, this propeller series meets our customers' demand for bigger, faster, more powerful outboards.

The WATERGRIP propeller series employs a new interchangeable and square shaped propeller bush that minimizes power loss in delivery.



MULTI-FUNCTION TILLER HANDLE

▶DF115B/100C ▶DF100B/90A/80A/70A ▶DF60A/60AV/50AV ▶DF50A/40A



Main features



Tachometer* with warning indicators



Three-position angle adjustable bracket



Power trim & tilt switch* and throttle grip friction adjuster



Troll mode switch*
• Activates SUZUKI Troll Mode System and controls RPM from idling engine speed up to 1200rpm at every 50rpm.

*Tachometer, Power trim & tilt switch and Troll mode switch are not available for 90AWQH.

MAINTENANCE KITS

Suzuki provides Maintenance Kits for speedy and reliable service. Each Kit comes with all the periodic maintenance parts necessary for each model. Please ask your local Suzuki dealer for the contents of each kit and applicable models.



ECSTAR

GENUINE OIL & CHEMICAL

What is ECSTAR

ECSTAR is a global brand name of SUZUKI Genuine Oil & Chemicals.

The ULTIMATE Formulation

Suzuki Approved Genuine engine oils have all been rigorously tested and certified by Suzuki engineers. You can be confident that they'll help keep your Suzuki outboard in perfect condition, giving you maximum performance and reliability over its lifetime.

Replacement Guideline (Engine Oil & Gear Oil)

Interval	1st time	20 hours or 1 month*
	From 2nd time	100 hours or 1 year*

*whichever comes first

This guideline may vary by outboard motor model, condition of use, region, etc. Please refer to the owner's manual or ask an authorized Suzuki dealer for more information.

ECSTAR Line up for OUTBOARD MOTOR



Availability may differ in some regions. Please contact your Suzuki local dealer.

SPECIFICATIONS & FEATURES

SPECIFICATIONS

	350AMD	300BMD	350A	325A	300B	300AP	250AP	250AUN	250	225	200		200AP	175AP	150AP	200A	175A	150A	140BG	115BG	140B	115B	100C					
Starting System	Electric		Electric			Electric			Electric			Starting System	Electric			Electric			Electric			Electric						
Recommended Transom Height (mm)	L:508 X:635 XX:762		X: 635 XX: 762			L: 508 X: 635 XX: 762*3			X: 635 XX: 762			L: 508 X: 635 XX: 762			L: 508 X: 635			L: 508 X: 635			L:508 X:635							
Weight (kg)*1	L:345 X:352 XX:360		X: 330 XX: 338			L: 284 X: 290 XX: 299*3			X: 275 XX: 284			X: 275 XX: 284			L: 236 X: 241			L: 235 X: 240			L: 188 X: 192		L: 190 X: 194		L: 186 X: 190		L: 188 X: 192	
Valve Train	DOHC 24-Valve		DOHC 24-Valve			DOHC 24-Valve			DOHC 24-Valve			Valve Train	DOHC 16-Valve			DOHC 16-Valve			DOHC 16-Valve			DOHC 16-Valve						
Valve Train Drive	Chain		Chain			Chain			Chain			Valve Train Drive	Chain			Chain			Chain			Chain						
Displacement (cm³)	4,390		4,390			4,028			3,614			Displacement (cm³)	2,867			2,867			2,045			2,045						
Maximum Output (kW)	257.4	220.7	257.4	239.0	220.7	220.7	183.9	183.9	165.5	147.1	Maximum Output (kW)	147.1	128.7	110.3	147.1	128.7	110.3	103.0	84.6	103.0	84.6	73.6						
Bore and Stroke (mm)	98 × 97		98 × 97			98 × 89			95 × 85			Bore and Stroke (mm)	97 × 97			97 × 97			86 × 88			86 × 88						
Operation Range (rpm)	5,700-6,300	5,300-6,300	5,700-6,300	5,300-6,300		5,700-6,300	5,500-6,100	5,700-6,300	5,500-6,100	5,000-6,000		Operation Range (rpm)	5,500-6,100	5,000-6,000	5,500-6,100	5,000-6,000	5,500-6,100	5,000-6,000	5,700-6,300	5,000-6,000	5,700-6,300	5,000-6,000						
Fuel Delivery System	Electronic Fuel Injection		Electronic Fuel Injection			Electronic Fuel Injection			Electronic Fuel Injection			Fuel Delivery System	Electronic Fuel Injection			Electronic Fuel Injection			Electronic Fuel Injection			Electronic Fuel Injection						
Oil Pan Capacity (L)	8.0		8.0			8.0			8.0			Oil Pan Capacity (L)	8.0			8.0			5.5			5.5						
Alternator	12V 54A		12V 54A			12V 54A			12V 54A			Alternator	12V 44A			12V 44A			12V 40A			12V 40A						
Trim Type	Power Trim and Tilt		Power Trim and Tilt			Power Trim and Tilt			Power Trim and Tilt			Trim Type	Power Trim and Tilt			Power Trim and Tilt			Power Trim and Tilt			Power Trim and Tilt						
Gear Ratio	2.29:1		2.29:1			2.08:1			2.29:1			Gear Ratio	2.50:1			2.50:1			2.59:1			2.59:1						
Control System	Drive By Wire		Drive By Wire			Drive By Wire			Mechanical			Control System	Drive By Wire			Mechanical			Drive By Wire			Mechanical						
Recommended Fuel*2	RON94/AKI89	RON91/AKI87	RON94/AKI89	RON91/AKI87		RON91/AKI87			RON91/AKI87			Recommended Fuel*2	RON91/AKI87			RON91/AKI87			RON91/AKI87			RON91/AKI87						
Propeller Selection (pitch)	12"-31.5"		12"-31.5"			15"-27.5"(R/R) 17"-26"(C/R)*3			15"-27.5"(R/R) 17"-26"(C/R)			Propeller Selection (pitch)	15"-27.5"(R/R) 17"-26"(C/R)			15"-27.5"(R/R) 17"-26"(C/R)			15"-25"(R/R) 17"-23"(C/R)		15"-25"(R/R) 17"-23"(C/R)		15"-25"(R/R) 17"-23"(C/R)					

All propellers are the 3-blade type. please inquire at your local dealer for details of the propeller.

*1: Dry Weight: Including battery cable, not including propeller and engine oil. *2: RON: Research method (minimum octane rating) AKI: (R+M)/2 method (minimum pump octane rating), (Only North America)

*3: DF300AP/DF250AP only

FEATURES

●=Standard Equip. ○=Optional Equip.

	350AMD	300BMD	350A	325A	300B	300AP	250AP	250AUN	250	225	200		200AP	175AP	150AP	200A	175A	150A	140BG	115BG	140B	115B	100C	
BODY COLOR	Black	●	●	●	●	●	●	●	●	●	●	BODY COLOR	Black	●	●	●	●	●	●	●	●	●	●	●
	White	●	●	●	●	●	●	●	●	●	●		White	●	●	●	●	●	●	●	●	●	●	●
INTEGRATED STEERING	●	●	●	●	●	●	●	●	●	●	●	INTEGRATED STEERING	●	●	●	●	●	●	●	●	●	●	●	●
SUZUKI DUAL LOUVER SYSTEM	●	●	●	●	●	●	●	●	●	●	●	SUZUKI DUAL LOUVER SYSTEM	●	●	●	●	●	●	●	●	●	●	●	●
SELF-ADJUSTING TIMING CHAIN	●	●	●	●	●	●	●	●	●	●	●	SELF-ADJUSTING TIMING CHAIN	●	●	●	●	●	●	●	●	●	●	●	●
SUZUKI ANTI-CORROSION SYSTEM	●	●	●	●	●	●	●	●	●	●	●	SUZUKI ANTI-CORROSION SYSTEM	●	●	●	●	●	●	●	●	●	●	●	●
OVER-REV. LIMITER	●	●	●	●	●	●	●	●	●	●	●	OVER-REV. LIMITER	●	●	●	●	●	●	●	●	●	●	●	●
TILT LIMIT SYSTEM	●	●	●	●	●	●	●	●	●	●	●	TILT LIMIT SYSTEM	●	●	●	●	●	●	●	●	●	●	●	●
WATER DETECTING SYSTEM	●	●	●	●	●	●	●	●	●	●	●	WATER DETECTING SYSTEM	●	●	●	●	●	●	●	●	●	●	●	●
FRESH WATER FLUSHING SYSTEM	●	●	●	●	●	●	●	●	●	●	●	FRESH WATER FLUSHING SYSTEM	●	●	●	●	●	●	●	●	●	●	●	●
DUAL WATER INLET	●	●	●	●	●	●	●	●	●	●	●	DUAL WATER INLET	●	●	●	●	●	●	●	●	●	●	●	●
SUB WATER INLET	○	○	○	○	○	○	○	○	○	○	○	SUB WATER INLET	○	○	○	○	○	○	○	○	○	○	○	○
KEYLESS START SYSTEM	○	○	○	○	○	○	○	○	○	○	○	KEYLESS START SYSTEM	○	○	○	○	○	○	○	○	○	○	○	○
SDSM**1	○	○	○	○	○	○	○	○	○	○	○	SDSM**1	○	○	○	○	○	○	○	○	○	○	○	○
OFFSET DRIVESHAFT	●	●	●	●	●	●	●	●	●	●	●	OFFSET DRIVESHAFT	●	●	●	●	●	●	●	●	●	●	●	●
2-STAGE GEAR REDUCTION	●	●	●	●	●	●	●	●	●	●	●	2-STAGE GEAR REDUCTION	●	●	●	●	●	●	●	●	●	●	●	●
HIGH ENERGY ROTATION	●	●	●	●	●	●	●	●	●	●	●	HIGH ENERGY ROTATION	●	●	●	●	●	●	●	●	●	●	●	●
SUZUKI DUAL PROP SYSTEM	●	●	●	●	●	●	●	●	●	●	●	SUZUKI DUAL PROP SYSTEM	●	●	●	●	●	●	●	●	●	●	●	●
VARIABLE VALVE TIMING	●	●	●	●	●	●	●	●	●	●	●	VARIABLE VALVE TIMING SYSTEM	●	●	●	●	●	●	●	●	●	●	●	●
MULTI-STAGE INDUCTION	●	●	●	●	●	●	●	●	●	●	●	MULTI-STAGE INDUCTION	●	●	●	●	●	●	●	●	●	●	●	●
SUZUKI SELECTIVE ROTATION	●	●	●	●	●	●	●	●	●	●	●	SUZUKI SELECTIVE ROTATION	●	●	●	●	●	●	●	●	●	●	●	●
SUZUKI PRECISION CONTROL	●	●	●	●	●	●	●	●	●	●	●	SUZUKI PRECISION CONTROL	●	●	●	●	●	●	●	●	●	●	●	●
NOISE REDUCTION	●	●	●	●	●	●	●	●	●	●	●	NOISE REDUCTION	●	●	●	●	●	●	●	●	●	●	●	●
OVERHEAD TANK	●	●	●	●	●	●	●	●	●	●	●	OVERHEAD TANK	●	●	●	●	●	●	●	●	●	●	●	●
AUTOMATIC TRIM**3	○	○	○	○	○	○	○	○	○	○	○	AUTOMATIC TRIM**3	○	○	○	○	○	○	○	○	○	○	○	○
GAS ASSIST SYSTEM	○	○	○	○	○	○	○	○	○	○	○	GAS ASSIST SYSTEM	○	○	○	○	○	○	○	○	○	○	○	○
THREE-WAY STORAGE	○	○	○	○	○	○	○	○	○	○	○	THREE-WAY STORAGE	○	○	○	○	○	○	○	○	○	○	○	○
SUZUKI TROLL MODE SYSTEM**2	○	○	○	○	○	○	○	○	○	○	○	SUZUKI TROLL MODE SYSTEM**2	○	○	○	○	○	○	○	○	○	○	○	○
SUZUKI EASY START SYSTEM	●	●	●	●	●	●	●	●	●	●	●	SUZUKI EASY START SYSTEM	●	●	●	●	●	●	●	●	●	●	●	●
LEAN BURN CONTROL SYSTEM	●	●	●	●	●	●	●	●	●	●	●	LEAN BURN CONTROL SYSTEM	●	●	●	●	●	●	●	●	●	●	●	●
DUAL INJECTOR	●	●	●	●	●	●	●	●	●	●	●	DUAL INJECTOR	●	●	●	●	●	●	●	●	●	●	●	●
O₂ SENSOR FEEDBACK CONTROL SYSTEM	●	●	●	●	●	●	●	●	●	●	●	O₂ SENSOR FEEDBACK CONTROL SYSTEM	●	●	●	●	●	●	●	●	●	●	●	●
SHALLOW WATER DRIVE	○	○	○	○	○	○	○	○	○	○	○	SHALLOW WATER DRIVE	○	○	○	○	○	○	○	○	○	○	○	○

*1: available by using with SMG4 *2: available by using with SMG4/Troll Mode Switch Panel *3: available by using with SMG4, and SPC

SPECIFICATIONS & FEATURES

SPECIFICATIONS

	100B	90A	80A	70A	90ATH	70ATH		60A/50A/40A	60ATH	50ATH/40ATH	60AQH/40AQH	60AV/50AV	60AVTH/50AVTH	30AT/25AT	30ATH/25ATH	30AR	30AQH	30A/25A		
Starting System	Electric				Electric		Starting System	Electric							Electric/Manual			Electric*5	Manual	
Recommended Transom Height (mm)	L: 508 X: 635				L: 508 X: 635		Recommended Transom Height (mm)	L: 508 X: 635*3							S: 381 L: 508	S: 381*4 L: 508	S: 381 L: 508	L: 508	S: 381	S: 381 L: 508
Weight (kg)*1	L: 157 X: 161	L: 156 X: 160		L: 162 X: 166		Weight (kg)*1	S: 102 L: 104 X: 107*3	L: 110 X: 113*3	L: 108 X: 111*3	L: 115 X: 118*3	L: 121 X: 124*3	S: 71 L: 72	S: 73*4 L: 74	S: 63 L: 64	L: 70	S: 65	S: 62 L: 63			
Valve Train	DOHC 16-Valve				DOHC 16-Valve		Valve Train	DOHC 12-Valve							OHC					
Valve Train Drive	Chain				Chain		Valve Train Drive	Chain							Belt					
Displacement (cm ³)	1,502				1,502		Displacement (cm ³)	941							490					
Maximum Output (kW)	73.6	66.2	58.8	51.5	66.2	51.5	DF60A: 44.1 DF50A: 36.8 DF40A: 29.4	44.1	DF50A: 36.8 DF40A: 29.4	DF60A: 44.1 DF50A: 36.8 DF40A: 29.4		DF30A: 22.1 DF25A: 18.4								
Bore and Stroke (mm)	75 × 85				75 × 85		Bore and Stroke (mm)	72.5 × 76							60.4 × 57					
Operation Range (rpm)	5,700-6,300		5,000-6,000		5,300-6,300	5,000-6,000	DF60A/50A: 5,300-6,300 DF40A: 5,000-6,000	5,300- 6,300	DF50A: 5,300-6,300 DF40A: 5,000-6,000	DF60A/50A: 5,300-6,300 DF40A: 5,000-6,000		DF30A: 5,300-6,300 DF25A: 5,000-6,000								
Fuel Delivery System	Electronic Fuel Injection				Electronic Fuel Injection		Fuel Delivery System	Electronic Fuel Injection							Battery-less Electronic Fuel Injection					
Oil Pan Capacity (L)	4.3				4.3		Oil Pan Capacity (L)	2.7							1.5					
Alternator	12V 27A				12V 27A		Alternator	12V 19A							12V 14A					
Trim Type	Power Trim and Tilt				Power Trim and Tilt		Trim Type	Power Trim and Tilt		Manual Trim & Gas Assisted Tilt	Power Trim and Tilt	Power Trim and Tilt	Manual Trim and Tilt	Gas Assisted Tilt	Manual Trim and Tilt					
Gear Ratio	2.59:1				2.59:1		Gear Ratio	2.27:1		2.42:1		2.09:1								
Control System	Mechanical				Mechanical		Control System	Mechanical							Mechanical					
Recommended Fuel*2	RON91/AKI87				RON91/AKI87		Recommended Fuel*2	RON91/AKI87							RON91/AKI87					
Propeller Selection(pitch)	13"-25"(R/R)				13"-25"(R/R)		Propeller Selection(pitch)	9"-17"							9"-15"					

All propellers are the 3-blade type. please inquire at your local dealer for details of the propeller.

*1: Dry Weight: Including battery cable, not including propeller and engine oil. *2: RON: Research method (minimum octane rating) AKI: (R+M)/2 method(minimum pump octane rating), (Only North America)

*3: DF60A only. *4: DF25ATH only. *5: DF25AE only.

FEATURES

●=Standard Equip. ○=Optional Equip

	100B	90A	80A	70A	90ATH	70ATH		60A/50A/40A	60ATH	50ATH/40ATH	60AQH/40AQH	60AV/50AV	60AVTH/50AVTH	30AT/25AT	30ATH/25ATH	30AR	30AQH	30A/25A
BODY COLOR	Black White	● ●	● ●	● ●	● ●	● ●	BODY COLOR	Black White	● ●	● ●	● ●	● ●	● ●	● ●	● ●	● ●	● ●	● ●
SUZUKI DUAL LOUVER SYSTEM	●	●	●	●	●	●	SUZUKI DUAL LOUVER SYSTEM	●	●	●	●	●	●	●	●	●	●	●
SELF-ADJUSTING TIMING CHAIN	●	●	●	●	●	●	SELF-ADJUSTING TIMING CHAIN	●	●	●	●	●	●	●	●	●	●	●
SUZUKI ANTI-CORROSION SYSTEM	●	●	●	●	●	●	SUZUKI ANTI-CORROSION SYSTEM	●	●	●	●	●	●	●	●	●	●	●
OVER-REV. LIMITER	●	●	●	●	●	●	OVER-REV. LIMITER	●	●	●	●	●	●	●	●	●	●	●
TILT LIMIT SYSTEM	●	●	●	●	●	●	TILT LIMIT SYSTEM	●*3	●	●	●	●	●	●	●	●	●	●
WATER DETECTING SYSTEM	●	●	●	●	●	●	WATER DETECTING SYSTEM	●	●	●	●	●	●	●	●	●	●	●
FRESH WATER FLUSHING SYSTEM	●	●	●	●	●	●	FRESH WATER FLUSHING SYSTEM	●	●	●	●	●	●	●	●	●	●	●
DUAL WATER INLET	●	●	●	●	●	●	DUAL WATER INLET	●	●	●	●	●	●	●	●	●	●	●
SUB WATER INLET	○	○	○	○	○	○	SUB WATER INLET	●	●	●	●	●	●	●	●	●	●	●
KEYLESS START SYSTEM	○	○	○	○	○	○	KEYLESS START SYSTEM	○	○	○	○	○	○	○	○	○	○	○
SDSM*1	○	○	○	○	○	○	SDSM*1	○	○	○	○	○	○	○	○	○	○	○
OFFSET DRIVESHAFT	●	●	●	●	●	●	OFFSET DRIVESHAFT	●	●	●	●	●	●	●	●	●	●	●
2-STAGE GEAR REDUCTION	●	●	●	●	●	●	2-STAGE GEAR REDUCTION	●	●	●	●	●	●	●	●	●	●	●
HIGH ENERGY ROTATION	●	●	●	●	●	●	HIGH ENERGY ROTATION	●	●	●	●	●	●	●	●	●	●	●
SUZUKI DUAL PROP SYSTEM	●	●	●	●	●	●	SUZUKI DUAL PROP SYSTEM	●	●	●	●	●	●	●	●	●	●	●
VARIABLE VALVE TIMING SYSTEM	●	●	●	●	●	●	VARIABLE VALVE TIMING SYSTEM	●	●	●	●	●	●	●	●	●	●	●
MULTI-STAGE INDUCTION	●	●	●	●	●	●	MULTI-STAGE INDUCTION	●	●	●	●	●	●	●	●	●	●	●
SUZUKI SELECTIVE ROTATION	●	●	●	●	●	●	SUZUKI SELECTIVE ROTATION	●	●	●	●	●	●	●	●	●	●	●
SUZUKI PRECISION CONTROL	●	●	●	●	●	●	SUZUKI PRECISION CONTROL	●	●	●	●	●	●	●	●	●	●	●
NOISE REDUCTION	●	●	●	●	●	●	NOISE REDUCTION	●	●	●	●	●	●	●	●	●	●	●
OVERHEAD TANK	●	●	●	●	●	●	OVERHEAD TANK	●	●	●	●	●	●	●	●	●	●	●
AUTOMATIC TRIM*4	○	○	○	○	○	○	AUTOMATIC TRIM*4	○	○	○	○	○	○	○	○	○	○	○
GAS ASSIST SYSTEM	○	○	○	○	○	○	GAS ASSIST SYSTEM	○	○	○	○	○	○	○	○	○	○	○
THREE-WAY STORAGE	○	○	○	○	○	○	THREE-WAY STORAGE	○	○	○	○	○	○	○	○	○	○	○
SUZUKI TROLL MODE SYSTEM*2	○	○	○	○	○	○	SUZUKI TROLL MODE SYSTEM*2	○	○	○	○	○	○	○	○	○	○	○
SUZUKI EASY START SYSTEM	●	●	●	●	●	●	SUZUKI EASY START SYSTEM	●	●	●	●	●	●	●	●	●	●	●
LEAN BURN CONTROL SYSTEM	●	●	●	●	●	●	LEAN BURN CONTROL SYSTEM	●	●	●	●	●	●	●	●	●	●	●
DUAL INJECTOR	●	●	●	●	●	●	DUAL INJECTOR	●	●	●	●	●	●	●	●	●	●	●
O ₂ SENSOR FEEDBACK CONTROL SYSTEM	○	○	○	○	○	○	O ₂ SENSOR FEEDBACK CONTROL SYSTEM	○	○	○	○	○	○	○	○	○	○	○
SHALLOW WATER DRIVE	○	○	○	○	○	○	SHALLOW WATER DRIVE	○	○	○	○	○	○	○	○	○	○	○

*1: available by using with SMG4 *2: available by using with SMG4/Troll Mode Switch Panel *3: DF60A only. *4: available by using with SMG4, and SPC

SPECIFICATIONS & FEATURES

THE
ULTIMATE
OUTBOARD MOTOR

SPECIFICATIONS

	20AT/ 15AT/9.9BT	20ATH 15ATH 9.9BTH	20AR/ 15AR/9.9BR	20A/15A/ 9.9B	8AR	9.9A/8A	6A/5A/4A	2.5	250W (Cargo)	90AWQH (Cargo)	
Starting System	Electric/Manual		Electric/Manual		Electric/Manual	Manual	Manual	Manual	Electric		
Recommended Transom Height (mm)	S: 381*3 L: 508 X: 635*4	S: 381*5 L: 508 X: 635*5	S: 381 L: 508		L: 508	S: 381 L: 508	S: 381 L: 508	S: 381 L: 508	X: 635 XX: 762	L: 508 X: 635	
Weight (kg)*1	S: 52.5*3 L: 54.5 X: 57*4	S: 53.5*5 L: 55.5 X: 58*5	S: 47 L: 48	S: 48 L: 49	S: 44 L: 45	L: 43.5	S: 39 L: 41.5	S: 24 L: 25	S: 13.5 L: 14	X: 279 XX: 288	L: 158 X: 162
Valve Train	OHC		OHC		OHC	OHC	OHV	OHV	DOHC 24-Valve	DOHC 16-Valve	
Valve Train Drive	Belt		Belt		Belt	Belt	Pushrod	Pushrod	Chain		
Displacement (cm ³)	327		327		208	138	68	3,614	1,502		
Maximum Output (kW)	DF20A: 14.7 DF15A: 11.0 DF9.9B: 7.3	DF20A: 14.7 DF15A: 11.0 DF9.9B: 7.3	DF20A: 14.7 DF15A: 11.0 DF9.9B: 7.3	DF20A: 14.7 DF15A: 11.0 DF9.9B: 7.3	DF9.9A: 7.3 DF8A: 5.9	DF6A: 4.4 DF5A: 3.7 DF4A: 2.9	1.8	183.9	66.2		
Bore and Stroke (mm)	60.4 × 57		60.4 × 57		51 × 51	60.4 × 48	48 × 38	95 × 85	75 × 85		
Operation Range (rpm)	DF20A: 5,300-6,300 DF15A: 5,000-6,000 DF9.9B: 4,700-5,700	DF20A: 5,300-6,300 DF15A: 5,000-6,000 DF9.9B: 4,700-5,700	DF20A: 5,300-6,300 DF15A: 5,000-6,000 DF9.9B: 4,700-5,700	DF20A: 5,300-6,300 DF15A: 5,000-6,000 DF9.9B: 4,700-5,700	DF9.9A: 5,200-6,200 DF8A: 4,700-5,700	DF6A: 4,750-5,750 DF5A: 4,500-5,500 DF4A: 4,000-5,000	5,250-5,750	5,500-6,100	5,300-6,300		
Fuel Delivery System	Battery-less Electronic Fuel Injection		Battery-less Electronic Fuel Injection		Carburetor	Carburetor	Carburetor	Carburetor	Electronic Fuel Injection		
Oil Pan Capacity (L)	1.0		1.0		0.8	0.7	0.38	8.0	4.3		
Alternator	12V 12A		12V 12A	12V 6A	12V 10A	12V 6A	12V 5A (op.)	-	12V 54A	12V 27A	
Trim Type	ower Tilt		Manual Trim and Tilt Power Tilt		Manual Trim and Tilt		Manual Trim and Tilt	Manual Trim and Tilt	Power Trim and Tilt	Gas Assisted Tilt	
Gear Ratio	2.08:1		2.08:1		2.08:1		1.92:1	2.15:1	2.08:1	2.59:1	
Control System	Mechanical		Mechanical		Mechanical	Mechanical	Mechanical	Mechanical	Mechanical		
Recommended Fuel**2	RON91/AK187		RON91/AK187		RON91/AK187	RON91/AK187	RON91/AK187	RON91/AK187	RON91/AK187		
Propeller Selection(pitch)	7"-12"		7"-12"		7"-11"	6"-7"	5.3/8"	15"-27.5"(R/R) 17"-26"(C/R)	13"-25"(R/R)		

All propellers are the 3-blade type. please inquire at your local dealer for details of the propeller.

*1: Dry Weight: Including battery cable, not including propeller and engine oil. *2: RON: Research method (minimum octane rating) AKI: (R+M)/2 method(minimum pump octane rating), (Only North America)

*3: DF20AT/DF9.9BT only. *4: DF9.9BT only. *5: DF9.9BTH only.

FEATURES

●=Standard Equip. ○=Optional Equip.

	20AT/ 15AT/9.9BT	20ATH 15ATH 9.9BTH	20AR/ 15AR/9.9BR	20A/15A/ 9.9B	8AR	9.9A/8A	6A/5A/4A	2.5	250W (Cargo)	90AWQH (Cargo)
BODY COLOR	Black ● White ●*3	Black ● White ●*4	Black ● White ●	Black ● White ●	Black ● White ●	Black ● White ●	Black ● White ●*5	Black ● White ●	Black ● White ●	Black ● White ●
INTEGRATED STEERING										
SUZUKI DUAL LOUVER SYSTEM										
SELF-ADJUSTING TIMING CHAIN									●	●
SUZUKI ANTI-CORROSION SYSTEM	●	●	●	●	●	●	●	●	●	●
OVER-REV. LIMITER	●	●	●	●	●	●	●	●	●	●
TILT LIMIT SYSTEM									●	●
WATER DETECTING SYSTEM									●	●
FRESH WATER FLUSHING SYSTEM	●	●	●	●	●	●	●	●	●	●
DUAL WATER INLET									●	●
SUB WATER INLET										○
KEYLESS START SYSTEM									○	○
SDSM**1	○	○	○	○					○	○
OFFSET DRIVESHAFT									●	●
2-STAGE GEAR REDUCTION									●	●
HIGH ENERGY ROTATION										
SUZUKI DUAL PROP SYSTEM										
VARIABLE VALVE TIMING									●	
MULTI-STAGE INDUCTION									●	
SUZUKI SELECTIVE ROTATION										
SUZUKI PRECISION CONTROL										
NOISE REDUCTION										
OVERHEAD TANK										
AUTOMATIC TRIM**6										●
GAS ASSIST SYSTEM										●
THREE-WAY STORAGE										
SUZUKI TROLL MODE SYSTEM**2									○	○
SUZUKI EASY START SYSTEM									●	●
LEAN BURN CONTROL SYSTEM	●	●	●	●						
DUAL INJECTOR										
O ₂ SENSOR FEEDBACK CONTROL SYSTEM										
SHALLOW WATER DRIVE										

*1: available by using with SMG4 *2: available by using with SMG4/Troll Mode Switch Panel *3: DF20AT/9.9BT only. *4: DF20ATH/9.9BTH only. *5: DF6A only. *6: available by using with SMG4, and SPC



 **SUZUKI**

